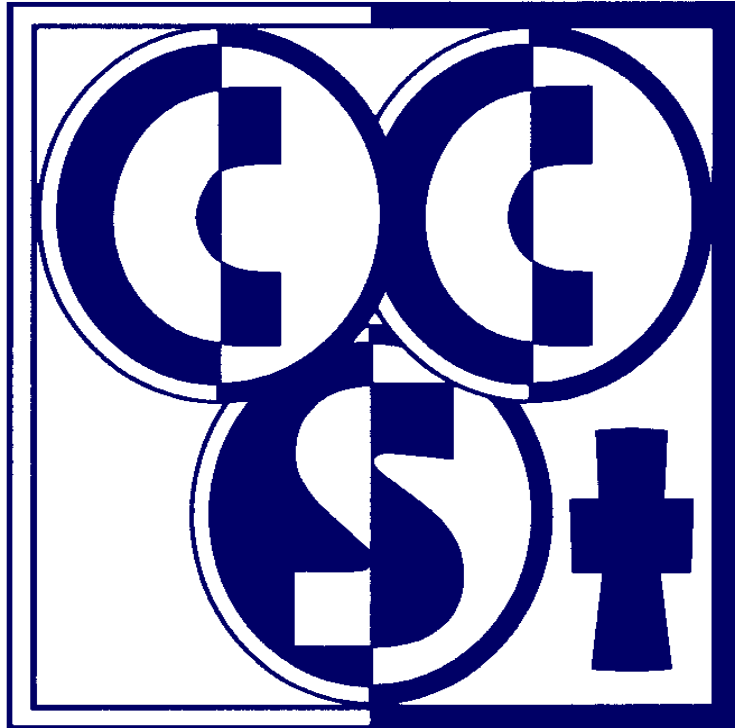


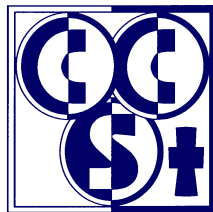
Christ Church
Church of England
Primary School



Accessibility Plan

March 2026

ACCESSIBILITY PLAN



Colne Christ Church C.E. Primary School

Introduction

Paragraph 3 of schedule 10 to the Equality Act 2010 states that the Governing Body must prepare an Accessibility Plan which will

- (a) increase the extent to which disabled pupils can participate in the school's curriculum,
- (b) improve the physical environment of the school for the purpose of increasing the extent to which disabled pupils are able to take advantage of education and benefits, facilities or services provided or offered by the school, and
- (c) improve the delivery to disabled pupils of information which is readily accessible to pupils who are not disabled.

Since September 2002, the Governing Body has had three key duties towards disabled pupils, under Part 4 of the DDA:

- not to treat disabled pupils less favourably for a reason related to their disability;
- to make reasonable adjustments for disabled pupils, so that they are not at a substantial disadvantage;
- to plan to increase access to education for disabled pupils.

This Accessibility plan has been developed in consultation with staff and governors of the school and covers the period from March 2024 – March 2027

Current Accessibility Arrangements:

1. This Accessibility Plan has been drawn up in consultation with the staff and governors of the school and covers the period from March 2024 – March 2027.
2. We are committed to providing a fully accessible environment which values and includes all pupils, staff, parents and visitors regardless of their education, physical, sensory, social, spiritual, emotional and cultural needs. We are committed to challenging negative attitudes about disability and accessibility and to developing a culture of awareness, tolerance and inclusion.
3. Colne Christ Church C.E. Primary School plans, over time, to increase the accessibility of provision for all pupils, staff and visitors to the school. The Accessibility Plan will contain relevant actions to:
 - Improve access to the **physical environment** of the school, adding specialist facilities as necessary. This covers improvements to the physical environment of the school and physical aids to access education.

- Increase access to the **curriculum** for pupils with a disability, expanding the curriculum as necessary to ensure that pupils with a disability are as, equally, prepared for life as are the able-bodied pupils; (If a school fails to do this they are in breach of the DDA). This covers teaching and learning and the wider curriculum of the school such as participation in after-school clubs, leisure and cultural activities or school visits. It also covers the provision of specialist **aids and equipment**, which may assist these pupils in accessing the curriculum.
 - Improve the delivery of **written information** to pupils, staff, parents and visitors with disabilities. Examples might include handouts, timetables, textbooks and information about the school and school events. The information should be made available in various preferred formats within a reasonable time frame.
5. Attached are Action Plans, relating to these key aspects of accessibility. These plans will be reviewed and adjusted on an annual basis. New Plans will be drawn up every three years.
 6. We acknowledge that there is a need for ongoing awareness raising and training for staff and governors in the matter of disability discrimination and the need to inform attitudes on this matter.
 7. The Accessibility Plan should be read in conjunction with the following policies, strategies and documents:
 - Curriculum
 - Equal Opportunities and Diversity
 - Staff Development
 - Health & Safety (including off-site safety)
 - Inclusion
 - Special Needs
 - Behaviour Management
 - School Improvement Plan
 - Asset Management Plan
 - Vision Statement
 8. The Action Plan for physical accessibility relates to the Access Audit of the School, which is undertaken by the Curriculum Committee. The audit will need to be revisited prior to the end of each first three-year plan period in order to inform the development of the new Plan for the following period.
 9. As curriculum policies are reviewed, a section relating to access will be added to that on Equality and Diversity. The terms of reference for all governors' committees will contain an item on "having regard to matters relating to Access".
 10. The School Brochure will make reference to this Accessibility Plan.
 11. The School's complaints procedure covers the Accessibility Plan.
 12. Information about our Accessibility Plan will be published on the school website.
 13. The Plan will be monitored through the Curriculum Committee of the Governors (and where relevant the Resources Committee).

Contextual Information

The original school building dates back to 1840. Since that time extensive re-modelling has taken place. In the summer term 2019 all our Key Stage 2 pupils moved into brand new, purpose built, teaching accommodation. During the summer term 2020 the main school building was extensively re-modelled and now provides teaching accommodation for EYFS and Key Stage 1 pupils. It also houses the school kitchens, assembly hall and main administration centre for the school.

The majority of the main school building and playground is accessible for a child in a wheelchair, however there are known external access issues (steps leading to the main entrance; steps from 'the school track'; and external access to the Reception and Year 1 classrooms). The age and location of the building are limiting factors. Internally, in the main building, the staff room is not accessible to a wheel chair user.

The Current Range of Disabilities within Christ Church CE Primary School

The school has children with a limited range of disabilities which include Autistic Spectrum Disorder and specific medical conditions. When children enter school with specific disabilities, the school contacts LA professionals for assessments, support and guidance for the school and parents. At present we have no wheelchair users.

We have a few children who have asthma and all staff are aware of these children. Inhalers are kept in classrooms / the medical room and a record of use is noted.

Some children have allergies or food intolerances.

All medical information is collated and available to staff, on the staff noticeboards and in the first aid room.

We have competent First Aiders who hold current First Aid certificates.

All medication is kept in a central safe and secure place which has easy access for First Aiders and staff members. Administration of medicines consent forms are filled in by parents outlining the illness and amount and time of medication. All medication that is given is recorded.

Appendix items

Improving the Physical Access at Christ Church C.E. Primary School - Page 5

Improving Curriculum Access at Christ Church C.E. Primary School – Page 8

Improving the Delivery of Written Information at Christ Church C.E. Primary School – Page 10

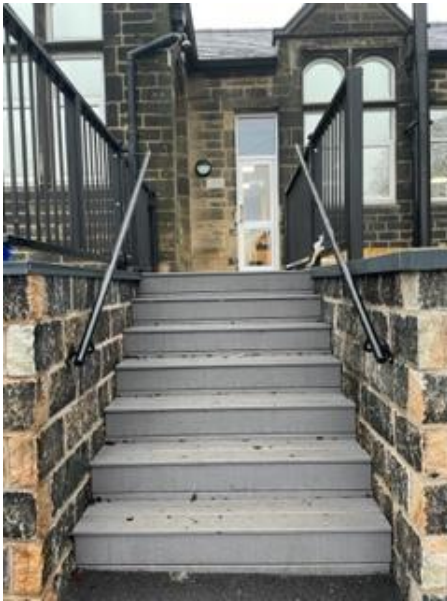
Christ Church C.E. Primary School Accessibility Plan 2024-2027

Improving the Physical Access at Christ Church C.E. Primary School

An Access Audit is carried out annually basis by the Headteacher and members of the Resources Committee.

Item	Activity	Timescale	Cost £
To improve physical access to the school environment	The school governors are aware that a number of access issues exist due to the age of parts of the building. In some areas modification (ie installation of ramps) may not be possible. Governors will however, take account of the needs of pupils, staff and visitors with physical difficulties and sensory impairments when planning and undertaking future improvements and refurbishments of the site and premises, such as improved access, lighting and colour schemes and more accessible facilities and fittings.	Ongoing	
Create Access Plans for individual disabled pupils	As part of individual pupil access audit develop bespoke plans and address individual need to ensure full access to the school environment.	Ongoing	
Current Access issues (see attached photographs below):			
Accessible car parking	No official car park / disabled parking facilities. Staff currently park on the 'school track' and disabled parents may do so.	Ongoing	
Doors	Main entrance door inaccessible to	Ongoing	

	<p>wheelchair users (due to steps down to main reception area)</p> <p>Steps from the track are inaccessible to wheelchair users.</p> <p>External steps to YR/Y1 classrooms are inaccessible.</p> <p>Main building cloakroom is an accessible entrance to a wheelchair user to the main building.</p> <p>Internal doors may not be easily opened by users with mobility issues.</p>		
Accessible toilet(s)	An accessible toilet is located in the middle of the main school. A further accessible toilet is located in the KS2 teaching block.	Ongoing	
Provision of induction loops	No induction loop is available.	Ongoing	
Teaching Spaces	All teaching spaces meet DfE recommendations regarding size and space. Internal layout may need to be adapted to meet specific pupil need.	Ongoing	
Corridors	Corridor in main building very narrow.		
Light switches, power outlets and emergency alarm buttons	All are installed and serviced on a regular basis – some may be difficult to reach by a wheelchair user. Key Stage 2 classroom lighting is operated through sensors.	Ongoing	
Adapted wash basins to be at wheelchair height with space under for wheelchair to allow user to get close to wash basin.	Wash basin available in the accessible toilets. There are no shower facilities.	Ongoing	



Restricted access to and from the external Reception and Year 1 classroom doors



Main entrance to the school has restricted access.



Restricted access from the track adjacent to the Headteacher's office

Christ Church C.E. Primary School Accessibility Plan 2024-2027

Improving the Curriculum Access at Christ Church C.E. Primary School

<u>Target</u>	<u>Strategy</u>	<u>Outcome</u>	<u>Timeframe</u>	<u>Achievement</u>
To liaise with Nursery providers regarding September intake	Identify pupils who have additional needs	Additional pupil needs identified / procedures and equipment in place by start of Autumn Term.	Ongoing	Additional needs met
Training for teachers on adapting the curriculum where appropriate	Review the specific needs for pupils living with a disability, in terms of basic daily living skills, relationships and future aspirations.	Teachers are aware of the relevant issues and can ensure that this group has equality of access to life-preparation learning. The use of other professional partners has been made available.	Ongoing	
All out-of-school activities are planned to ensure the participation of the whole range of pupils	Review all out-of-school provision to ensure compliance with legislation	All out-of-school activities will be conducted in an inclusive environment with providers that comply with all current and future legislative requirements	Ongoing	Increase in access to all school activities for all disabled pupils
Classrooms are optimally organised to promote the participation and independence of all pupils	Review and implement a preferred layout of furniture and equipment to support the learning process in individual class bases	Lessons start on time without the need to make adjustments to accommodate the needs of individual pupils	Ongoing	Increase in access to the National Curriculum
To provide specialist equipment to promote participation in learning by all pupils.	Assess the needs of children in each class and provide equipment as needed (e.g. pencil grips, sloping writing board, specialist chair etc)	Children will develop independent learning skills	Ongoing	
To meet the needs of individuals during statutory SATS tests in KS2	Children will be assessed in accordance with regular classroom practice and additional time, use of equipment etc will be applied for as needed.	Barriers to learning will be reduced or removed, enabling children to achieve to their full potential.	Ongoing	
Training for Awareness Raising of Disability Issues	Provide training for governors, staff, pupils and	Whole school community aware of issues relating to Access	Ongoing	Society will benefit by a more inclusive school and

where appropriate

parents

Discuss perception of issues with staff to determine the current status of school

social environment

Christ Church C.E. Primary School Accessibility Plan 2024-2027

Improving the Delivery of Written Information at Christ Church C.E. Primary School

TARGET	STRATEGY	OUTCOME	TIMEFRAME	ACHIEVEMENT
Availability of written material in alternative formats	The school will make itself aware of the services available through the LA for converting written information into alternative formats.	The school will be able to provide written information in different formats when required for individual purposes	Ongoing	Delivery of information to disabled pupils improved
Make available school brochures, school newsletters and other information for parents in alternative formats	Review all current school publications and promote the availability in different formats for those that require it.	All school information available for all	Ongoing	Delivery of school information to parents and the local community improved
Review documentation with a view of ensuring accessibility for pupils with visual impairment	Get advice from VI teacher on alternative formats and use of IT software to produce customized materials.	All school information available for all	Ongoing	Delivery of school information to pupils & parents with visual difficulties improved.
Raise the awareness of adults working at and for the school on the importance of good communications systems.	Arrange training courses.	Awareness of target group raised	Ongoing	School is more effective in meeting the needs of pupils.